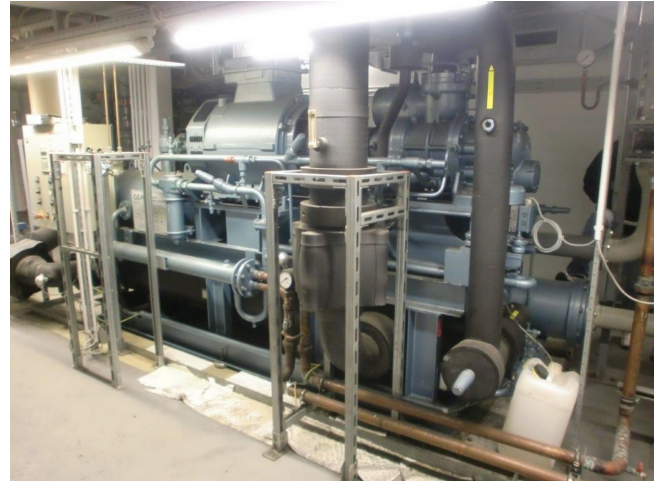


# Grasso RR 800

## Specifications

Merk	Grasso
Type	RR 800
Product type	Water Cooled Chiller
Capaciteit kW	798
Capaciteit Tons	226,9
Koudemiddel	NH 3 (ammonia)
Pump	✓
Gewicht in kg.	5500
Afmetingen	4000x1400x2100 mm (LxWxH)
Opmerkingen	# // 1x Compressor Grasso N-1 // Electromotor: 200 kW at 2975 RPM
Stock	1



## Description

### Used Grasso RR 800

Water Cooled Waterchiller Grasso RR 800 with 1 screw compressor Grasso N-1. This used Waterchiller runs on NH3 ammonia. Including control panel, Siemens COROS OP5 simatic panel and Electromotor Schorch KN7315-AB01B (200 kW at 2975 RPM)

